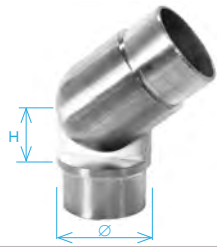


flush angles adjustable



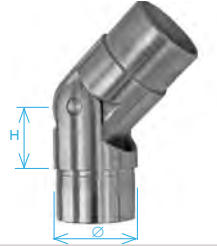
Quality	Finish	Ø	art.	H
AISI304	satin	33,7x2,0	A/0302-233	22
		42,4x2,0	A/0302-242	27
		48,3x2,0	A/0302-248	30
AISI316	polish	42,4x2,0	A/0302-242-L	27
		42,4x2,0	A14/0302-242	27
	polish	42,4x2,0	A14/0302-242-L	27



flush angles adjustable



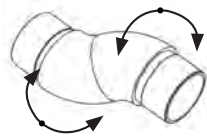
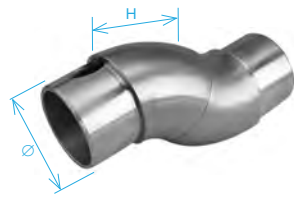
Quality	Finish	Ø	art.	H	D
AISI304	satin	42,4	A7/42-55	30	55



Quality	Finish	Ø	art.	H
AISI304	satin	42,4x2,0	A/0312-242	30



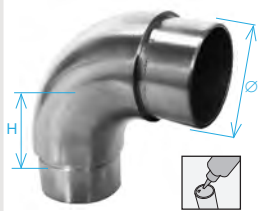
Quality	Finish	Ø	art.	H	D
AISI304	satin	42,4	A7/42-55-A	27	55



Quality	Finish	Ø	art.	H
AISI304	satin	42,4x2,0	A/0302-042	58



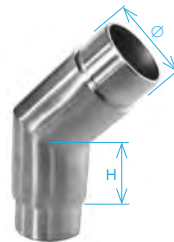
flush angles



Quality	Finish	Ø	art.	H
AISI304	satin	33,7x2,0	A/0305-233	35
		42,4x2,0	A/0305-242	30
		42,4x2,0	A/0305-242-S	42
		48,3x2,0	A/0305-248	45
AISI316	polish	42,4x2,0	A/0305-242-L	42
		42,4x2,0	A14/0305-242	30
ZAMAK	satin	42,4x2,0	A14/0305-242-L	30
		42,4x2,0	ZN-SATIN/0305-242	30



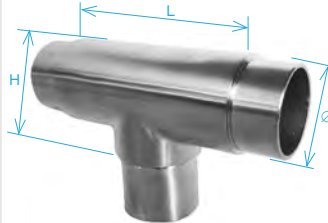
flush angles



Quality	Finish	Ø	art.	H
AISI304	satin	42,4x2,0	A/0300-242	40



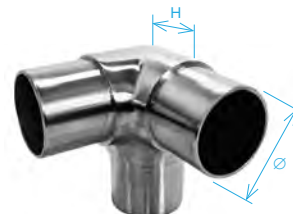
Quality	Finish	Ø	art.	H
AISI304	satin	33,7x2,0	A/0303-233	25
		42,4x2,0	A/0303-242	27
		48,3x2,0	A/0303-248	30
AISI316	polish	42,4x2,0	A/0303-242-L	30
		42,4x2,0	A14/0303-242	30
	polish	42,4x2,0	A14/0303-242-L	30



Quality	Finish	Ø	art.	H	L
AISI304	satin	42,4x2,0	A/0307-242	30	60
		42,4x2,0	A/0307-242-L	30	61



Quality	Finish	Ø	art.	H
AISI304	satin	42,4x2,0	A/0301-242-S	30
		42,4x2,0	A/0301-242	30
		42,4x2,0	A/0301-242-L	30



Quality	Finish	Ø	art.	H
AISI304	satin	42,4x2,0	A/0304-242	30
		42,4x2,0	A/0304-242-L	30



Quality	Finish	Ø	art.	H
AISI304	satin	42,4x2,0	A/1305-242	48



Quality	Finish	Ø	art.	H
AISI304	satin	42,4x2,0	A/0308-242	30

